

Uniclass L4181	EPIC D181
CI/SfB (31.59) X	
NOVEMBER 2003	

Coburn Interior Sliding Systems



Interior Sliding Door Gears

FOR CUPBOARDS, WARDROBES, INTERIOR SLIDING AND FOLDING DOORS

A comprehensive range of top hung and bottom rolling door gears for all sliding applications.

Most of the gears shown in this catalogue are available in standard packed sets complete with all sliding door fittings including detailed installation instructions and all necessary screws. For full details of set contents and sizes available refer to the page relating to the door gear concerned.

With the exception of Straightaway 100, top tracks and top guide channels detailed in this catalogue are normally fixed by woodscrews directly into a timber head. Separate track brackets are not needed but, if required, may be supplied for 8-25 Top Guide Track used with Straightaway 720 Bottom Rolling Door System. Straightaway 100 track fixing brackets are available as detailed on page 20.



Index

CUPBOARD AND WARDROBE DOOR GEARS

Maximum Door Weight (kg)	Maximum Door Height (m)	System Name	Page Numbers
9	-	Hush	4
15	2.4	Twin-fold	11
25	1.5	Jason	5
27	2.0	Double 60	6-7
27	2.0	Double 60X	8
27	2.0	Single 60	9
27	2.0	Twin 60	9
45	2.1	Twin 100	10

INTERIOR SLIDING DOOR GEARS

45	2.1	House One	14-15
50	2.1	Solo Vitesse	16-17
55	2.4	Flyside Panther	18-19
100	2.5	Straightaway 100	20

BOTTOM ROLLING SLIDING DOOR GEARS

55	2.1	Straightaway 660	21
115	2.4	Straightaway 700	22
180	3.0	Straightaway 710	23
400	3.5	Straightaway 720	23

FOLDING DOORS

15	2.4	Twin-fold	11
27	2.5	Foldaside 100	12
27	2.5	CentaFold 100	13

All performance recommendations apply to gear only and specifiers and purchasers must satisfy themselves that building structures and fixing are adequate for the door weights and will allow the specified working clearance to be maintained under all conditions.

Loadings given are based on doors subjected to normal manual usage under normal conditions.

Whilst the systems shown in this catalogue are especially suitable for interior openings, their use may be considered in some instances for exterior applications. Consult the manufacturer before using.

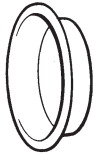
For heavier doors apply for details of alternative systems.



Certificate No. FS 14679
BS EN ISO 9001: 1994

The products designed and supplied by Hillaldam Coburn Ltd are covered by a Quality Assurance system in accordance with BS EN ISO 9001: 1994

Door Furniture for Interior Sliding Doors



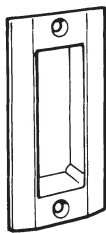
WHITE PLASTIC
45mm OVERALL DIAMETER
38mm CUT OUT DIAMETER
5mm CUT OUT DEPTH
95-611
FLUSH HANDLE



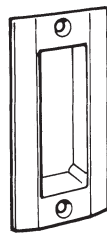
FOR STRAIGHT SLIDING DOORS
PRESSED ALUMINIUM,
ANODISED FINISHED
102 x 44mm
95-620
FLUSH PULL



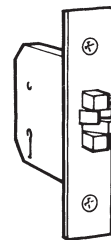
FOR FOLDING AND STRAIGHT
SLIDING DOORS.
EXTRUDED ALUMINIUM,
80 x 20mm
95-622
DOOR PULL



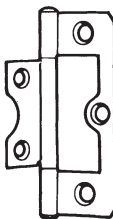
PRECISION DIE CAST.
100 x 50mm
POLISHED BRASS
95-615
FLUSH HANDLE



PRECISION DIE CAST.
100 x 50mm
SATIN CHROME
95-617
FLUSH HANDLE



BRASS EXPANDING CLAW
3 LEVERS, FLAT FOREND.
152 x 25mm. STEEL
CASE
DEPTH 75mm
HEIGHT 70mm
THICKNESS 14mm
BACKSET 57mm
95-643
CLAW LOCK



STEEL, PLATED FINISH
SURFACE MOUNTED.
60 x 40mm
SUPPLIED IN PACKS OF 3
WITH ALL SCREWS
95-521
HINGES



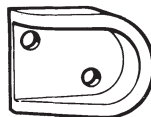
FLUSH BOLTS 150 x 40mm
95-669 (GAA) 95-675 (SAA)
FLUSH BOLTS 190 x 40mm
95-670 (GAA) 95-677 (SAA)



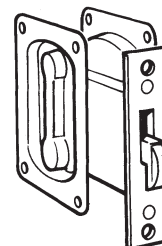
FOR FOLDING DOORS.
EXTRUDED ALUMINIUM,
ANODISED FINISH.
95-582
FLOOR BOLT



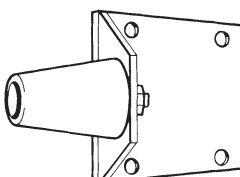
NYLON, RUBBER BUFFER
41mm WIDE
22mm OFFSET
97-726
DOOR STOP



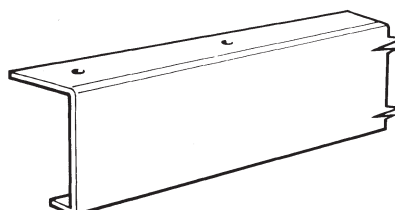
NYLON
25mm WIDE
25mm OFFSET
97-728
DOOR STOP



BRASS BOLT AND FOREND.
STEEL CASE
HANDLE PLATES
98 x 64mm
SATIN CHROME
95-655
**HOOK LATCH
SET**



FOR INTERIOR OR EXTERIOR USE.
WALL MOUNTING. EXTRUDED
ALUMINIUM WITH BLACK
RUBBER BUFFER.
97-720
DOOR STOP



STEEL PELMETS, GALVANISED TO
BS EN 10142, FOR USE WITH
HOUSE ONE, SOLO VITESSE
AND FLYASIDE PANTHER
SLIDING DOOR GEARS
97-707-3 LENGTH 1.8m
97-707-5 LENGTH 2.4m
STEEL PELMETS

Hush Cupboard Sliding Door Gear

A TOP HUNG DOOR GEAR FOR LIGHT-WEIGHT CUPBOARD DOORS

APPLICATION

Quiet top hung system, single or multiple track runs.

RANGE

Maximum door weight 9kg (20lb).

DOOR CONSTRUCTION

Door thickness 12 to 20mm, usually solid. Width of door not less than half height.

FIXING

Top track soffit fixed. Individual tracks allow for variation of door thickness. Bottom guides may be recessed or proud. Position sliders near edge of door.

TOP TRACK

13-2 Extruded Aluminium drilled for soffit fixing. Lengths 1.2m and 1.8m.

TOP SLIDERS, BOTTOM GUIDES AND DOOR STOP

Nylon, with woodscrews for fixing.

FINGER PULLS

95-611 white plastic, size 32mm diameter, 8mm deep.

STANDARD TRACKSETS

SET 4 Z – For two doors within 1.2m opening.

SET 6 Z – For two doors within 1.8m opening.

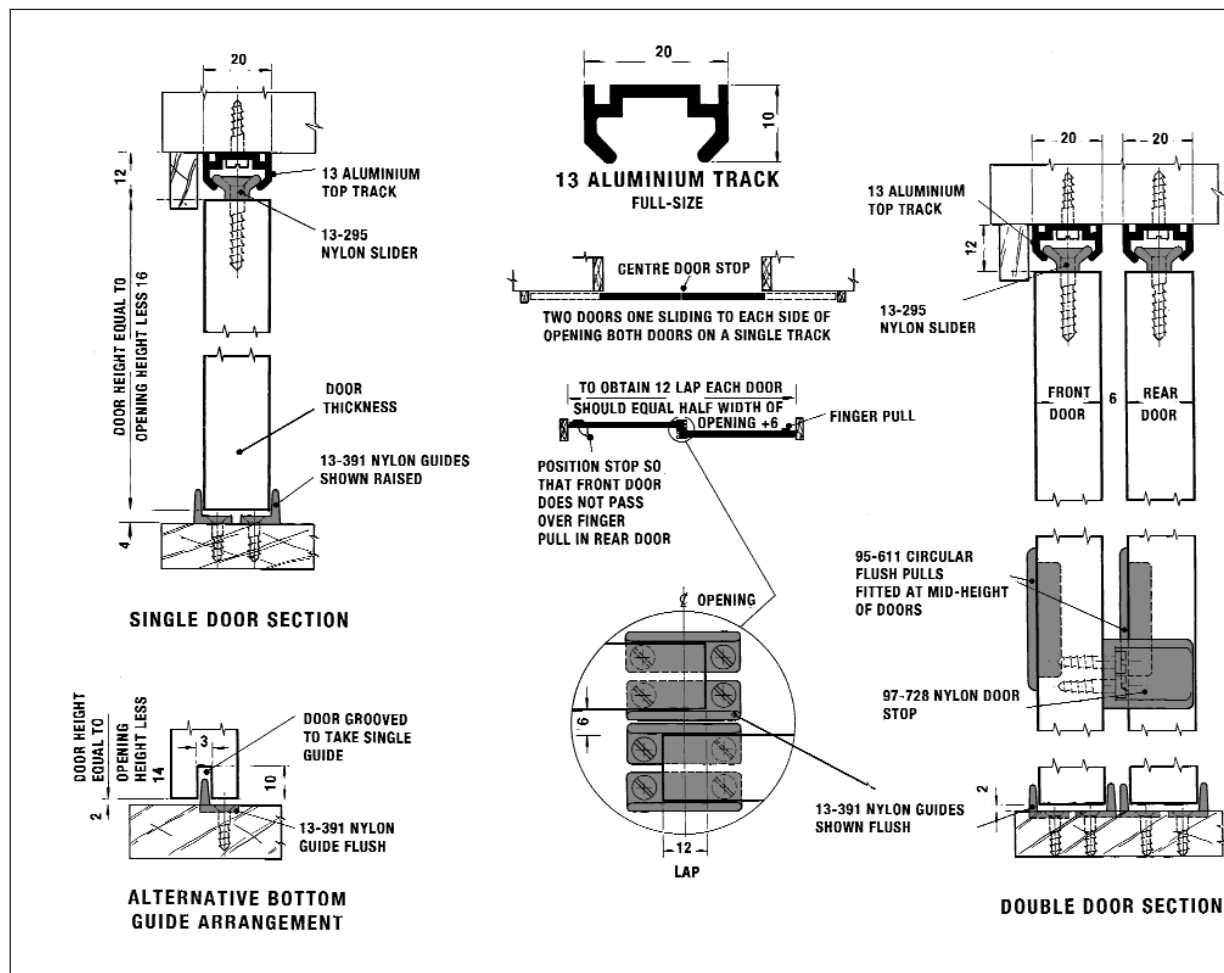
Contents per set: all sliders, top track, bottom guides, door stop, finger pulls and all screws for two doors on parallel tracks.

TWO DOOR COMPONENT PACK 2 Z

Comprising all necessary sliders, guides, finger pulls, door stops and screws for hanging two doors.

TOP TRACK

Available in 1.2m and 1.8m lengths.



Jason Bottom Rolling Sliding Door Gear

FOR CUPBOARD AND WARDROBE DOORS

APPLICATION

Bottom rolling system for cupboard, wardrobe or similar domestic doors, single or multiple track runs.

RANGE

- Maximum door weight 25kg (50lb).
- Maximum door height 1.5m (5ft).
- Maximum door width 1m (3ft 3ins).

DOOR CONSTRUCTION

Minimum door thickness 12mm solid. Width one third height minimum, handle three fifths from bottom for best results.

FIXING

Top channel soffit fixed, floor track recessed or surface mounted. Side fixing rollers suit 12mm doors minimum. Close clearances need to be maintained to ensure correct operation. Position rollers close to edge of door.

BOTTOM ROLLERS

Side fixing. Steel casing, zinc plated, nylon wheels, ground steel axles.

BOTTOM TRACK

60-2 Aluminium, drilled and c/sk for woodscrews. Lengths 1.2m and 1.8m.

TOP GUIDE

Nylon edge fixing.

TOP GUIDE CHANNEL

40-2 Aluminium, drilled and c/sk for woodscrews. Lengths 1.2m and 1.8m.

DOOR STOP

97-728 Nylon.

FINGER PULL

95-611 White plastic, size 32mm diameter, 8mm deep.

STANDARD TRACKSETS

SET 4 J – For two doors within 1.2m opening.

SET 6 J – For two doors within 1.8m opening.

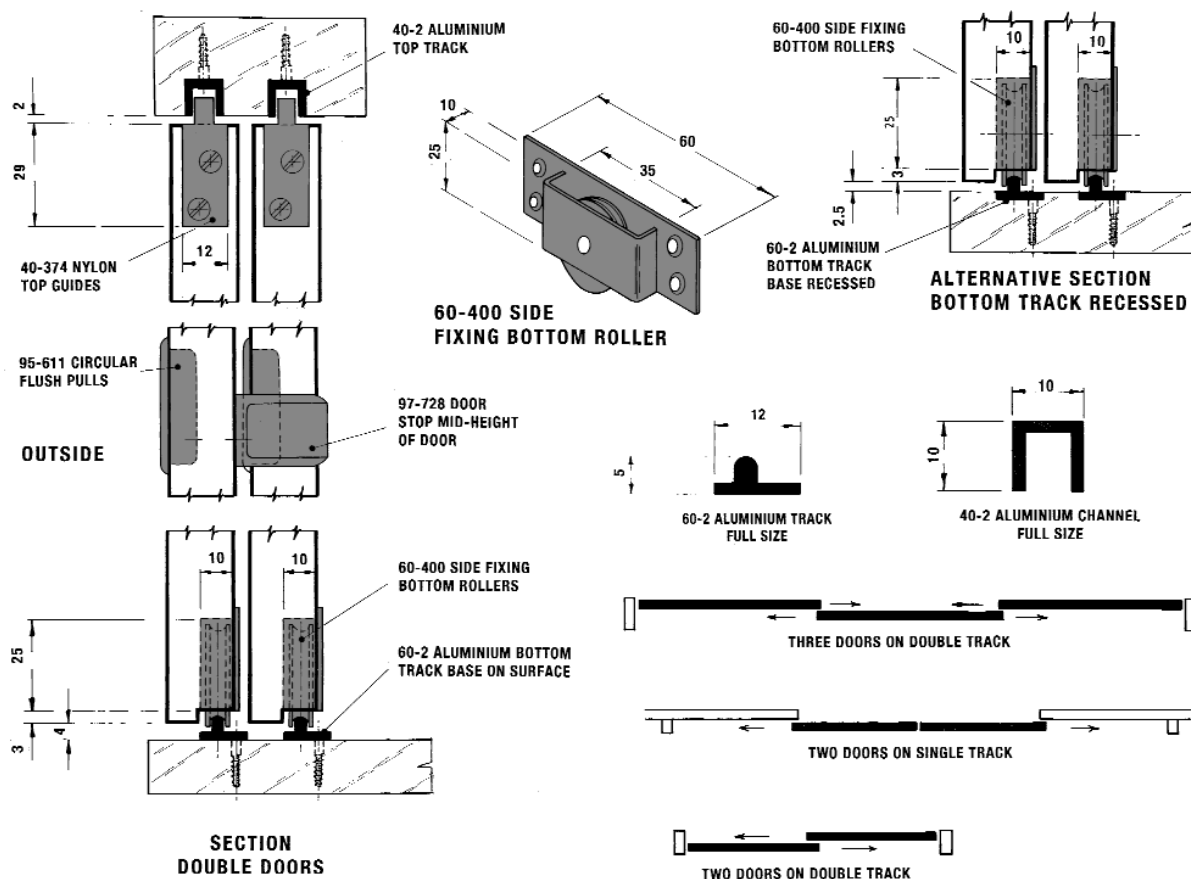
Contents per set: 2 lengths of bottom track, 2 lengths of top channel, 4 bottom rollers, 4 nylon top guides, finger pulls, door stop and all screws.

TWO DOOR COMPONENT PACK 2 J

Comprising all necessary bottom rollers, top guides, door stop finger pulls and screws for two doors.

TOP CHANNEL AND BOTTOM TRACK

Available in 1.2m and 1.8m lengths.



Double 60 Wardrobe Sliding Door Gear

FOR TOP HUNG DOORS OPERATING ON A ONE-PIECE DOUBLE TRACK

APPLICATION

For wardrobes, cupboards and similar doors.
Light domestic use, normal handling.

RANGE

- Maximum door weight 27kg (60lb).
- Maximum door height 2m (6ft 6ins).
- Maximum door width 1m (3ft 3ins).

DOOR CONSTRUCTION

Door thickness 22 to 35mm. Frame width 30mm minimum to accommodate hanger aprons. Door width one quarter height minimum, handle height two thirds from bottom for best results.

FIXING

Soffit fixed, one piece double top track. Fixed track centres need adjustable gaps between doors. Bottom guides recessed or proud. Position hangers close to edge of doors.

HANGERS

Nylon wheels, steel axles, plated steel adjustable aprons.

TOP TRACK

Aluminium drilled for soffit fixing.

BOTTOM GUIDES

Nylon, woodscrew fixing.

DOOR STOP

97-728 Nylon.

FINGER PULL

95-611 White plastic, size 32mm diameter, 8mm deep.

DOUBLE 60 WARDROBE SLIDING DOOR GEAR

STANDARD TRACKSETS

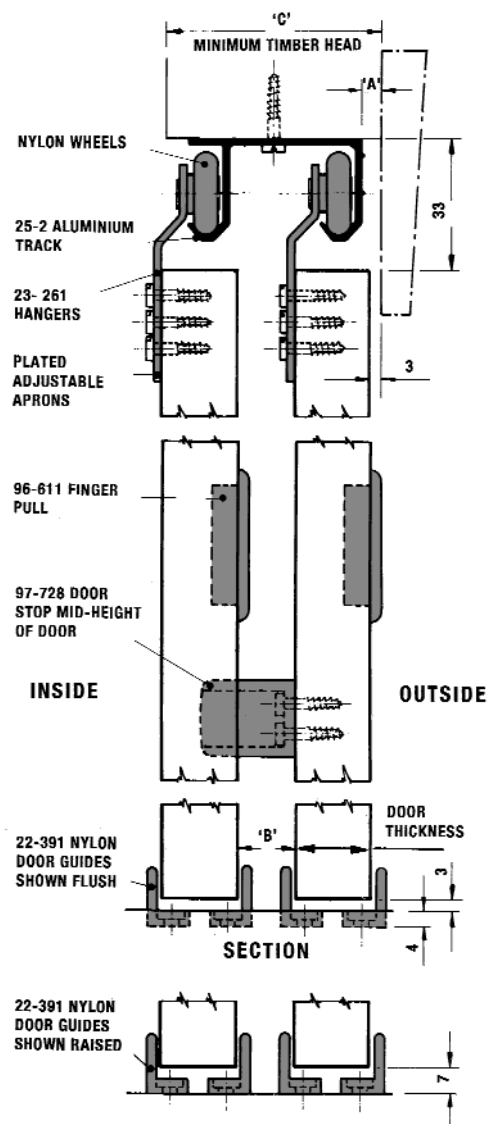
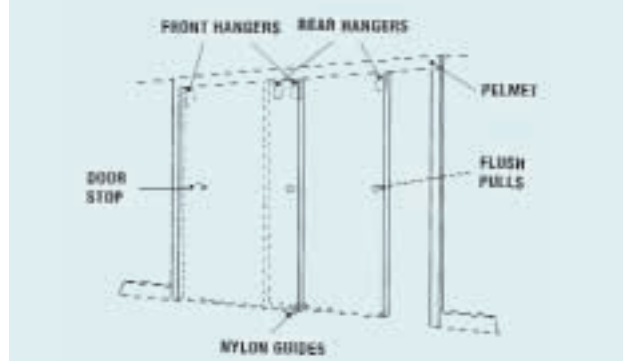
SET 4D – For two doors within 1.2m opening, comprising one 1.2m length of double one-piece top track, 2 pairs of hangers, 4 nylon guides, 2 finger pulls, 1 door stop and all necessary screws.

SET 5D – For two doors within 1.5m opening, as above but comprising 1.5m track length.

SET 6D – For two doors within 1.8m opening as above but comprising 1.8m track length.

SET 8D – For three doors within 2.4m opening as above but comprising 2.4m track length and extra pair of hangers, guides and handle.

SET 1TD – Single door component pack for adding extra door per opening. Contents, all necessary hangers, guides, handle and screws for one door.



DOOR THICKNESS	DIM 'A'	DIM 'B'	DIM 'C'
35	22.5	6.5	76
32	19.5	9.5	73
28	14.5	13.5	68
25	11.5	16.5	65
22	8.5	19.5	62

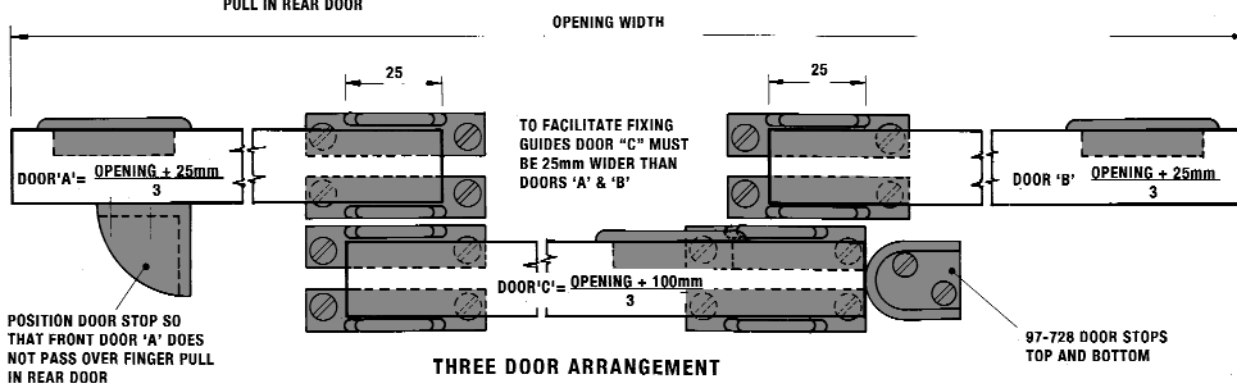
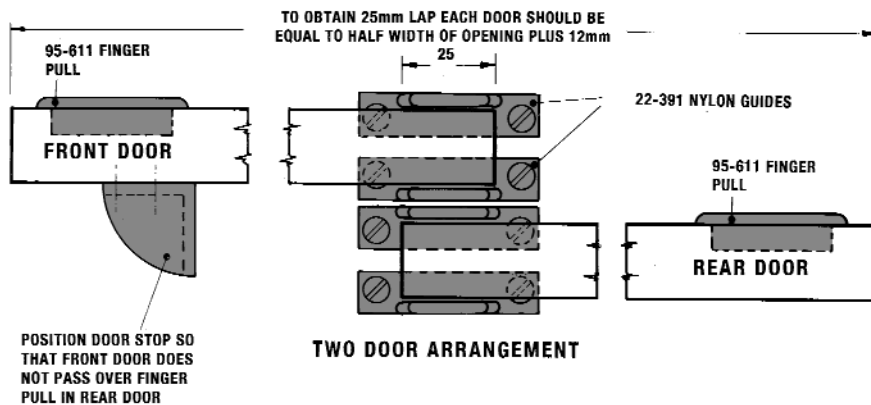
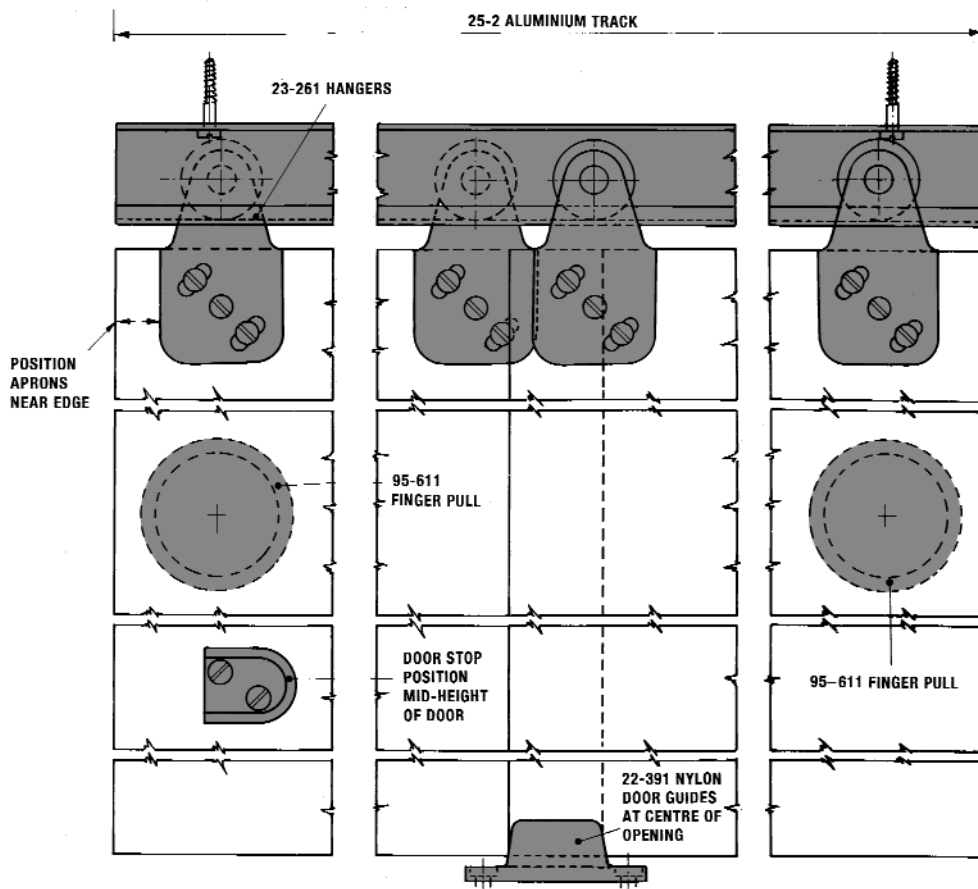


TWO DOORS SLIDING



THREE DOORS SLIDING

97-728 DOOR STOP



Double 60X Wardrobe Sliding Door Gear

FOR EXTRA THICK DOORS OPERATING ON A ONE-PIECE DOUBLE TOP TRACK

APPLICATION

For wardrobes and cupboards using standard flush doors of light weight construction.

RANGE

- Maximum door weight 27kg (60lb).
- Maximum door height 2m (6ft 6ins).
- Maximum door width 1m (3ft 3ins).

DOOR CONSTRUCTION

Door thickness between 36 to 44mm. Minimum frame width 30mm to accommodate hanger aprons. Door width should not be less than one quarter height. Recommended handle height two thirds from bottom of door for best results.

FIXING

Soffit fixed, one piece double top track. Fixed track centres need adjustable gaps between doors. Bottom guides recessed or proud. Position hangers close to edge of doors.

HANGERS

Nylon wheels, ground steel axles, plated steel adjustable aprons.

TOP TRACK

Aluminium drilled for soffit fixing.

BOTTOM GUIDES

Nylon, woodscrew fixing.

DOOR STOP

97-728 Nylon.

FINGER PULL

95-611 White plastic, size 32mm diameter, 8mm deep.

STANDARD TRACKSETS

SET 4DX – For two doors within 1.2m opening.

SET 5DX – For two doors within 1.5m opening.

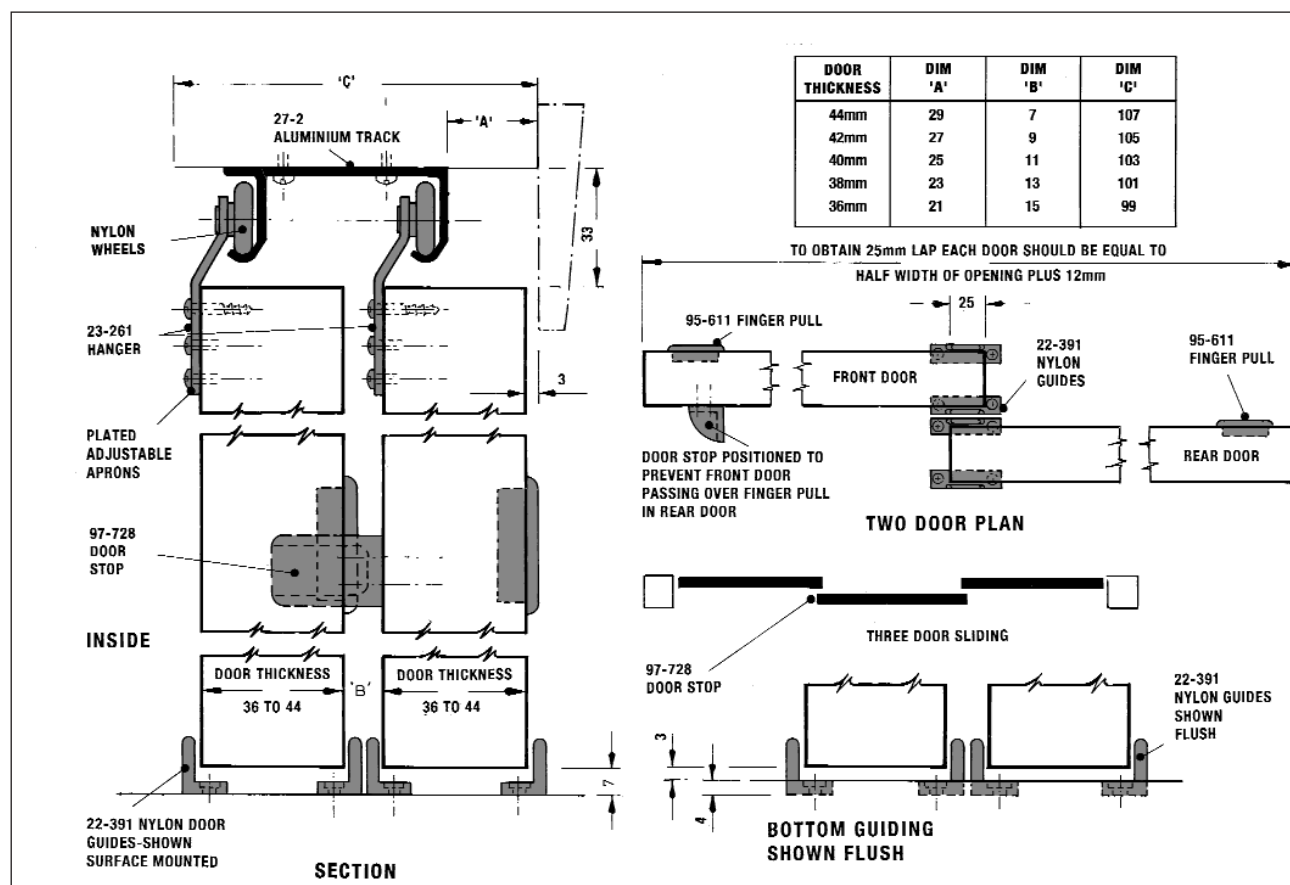
SET 6DX – For two doors within 1.8m opening.

SET 8DX – For three doors within 2.4m opening.

Contents per set: 1 length of double one-piece aluminium top track, door hangers, nylon guides, finger pulls, door stops and all screws.

SINGLE DOOR COMPONENT PACK 1 TD

Comprising all necessary hangers, guides, finger pulls, door stop and screws for one door.



Twin 60 & Single 60 Wardrobe Sliding Door Gear

FOR CUPBOARD OR WARDROBE DOORS

APPLICATION

Top hung system for wardrobes, cupboards and similar doors, single or multiple runs of track. Light domestic use, normal handling.

RANGE

- Maximum door weight 27kg (60lb).
- Maximum door height 2m (6ft 6ins).
- Maximum door width 1m (3ft 3ins).

DOOR CONSTRUCTION

Door thickness 16 to 40mm. Frame width 30mm minimum to accommodate hanger aprons. Door width one quarter height minimum, handle height two thirds from bottom for best results.

FIXING

Top track soffit fixed. Individual tracks allow for variation of door thickness. Guides at floor level recessed or proud. Position hanger close to edge of doors.

HANGERS

Nylon wheels, ground steel axles, plated steel adjustable aprons.

TOP TRACK

23-2 Aluminium drilled for soffit fixing.
Lengths 1.2m to 2.4m.

BOTTOM GUIDES

Nylon, woodscrew fixing.

DOOR STOP

97-728 Nylon.

FINGER PULL

95-611 White plastic, size 32mm diameter, 8mm deep.

STANDARD TRACKSETS

SINGLE 60

SET 4S – For one door - 600mm opening.

SET 5S – For one door - 750mm opening.

SET 6S – For one door - 900mm opening.

Contents per set: 1 length of top track, 2 hangers, nylon guides, finger pull and all screws.

TWIN 60

SET 4T – For two doors within 1.2m opening.

SET 5T – For two doors within 1.5m opening.

SET 6T – For two doors within 1.8m opening.

SET 8T – For three doors within 2.4m opening.

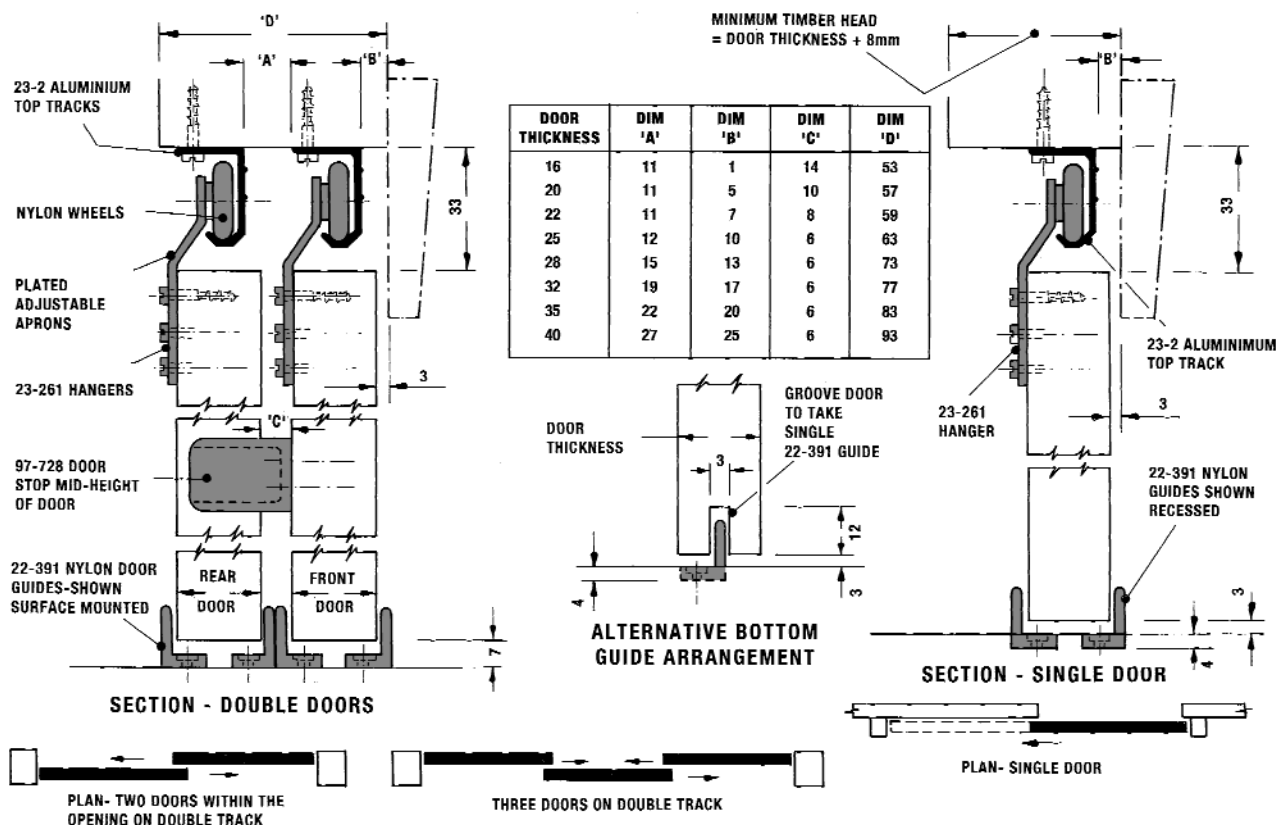
Contents per set: 2 lengths of top track, hangers, nylon guides, finger pulls, door stops and all screws.

SINGLE DOOR COMPONENT PACK 1TD

Comprising all necessary hangers, guides, finger pull, door stop and screws for one door.

TOP TRACK

Available in 1.2, 1.5, 1.8 and 2.4m lengths.



Twin 100 Wardrobe Sliding Door Gear

WITH TWIN PARALLEL TRACKS

APPLICATION

Top hung system for wardrobes, cupboards and similar doors. Single or multiple runs of track. Heavy public use.

RANGE

- Maximum door weight 45kg (100lb).
- Maximum door height 2.1m (7ft).
- Maximum door width 1.2m (4ft).

DOOR CONSTRUCTION

Door thickness 20 to 40mm. Frame width 38mm minimum to accommodate hanger aprons. Door width quarter height minimum, handle height two thirds from bottom for best results.

FIXING

Top track soffit fixed. Individual tracks allow for variation of door thickness. Guides at floor level recessed or proud. On treble track installations floor channel should be used as shown. Position hangers close to edge of door.

HANGERS

Nylon wheels, ground steel axles, plated steel adjustable aprons.

TOP TRACK

26-2 Aluminium, drilled for soffit fixing. Lengths 1.8m and 2.4m.

BOTTOM GUIDES

Nylon fixed with woodscrews.

ALTERNATIVE BOTTOM GUIDING

Groove bottom of door for 42-1 Channel and position 42-371 Nylon guide at centre of door travel.

DOOR STOP

97-726 Nylon with rubber buffer.

HANDLE

95-617 Flush handle size 100 x 50mm.

STANDARD TRACKSETS

SET 6H – For two doors within 1.8m opening.

SET 8H – For three doors (2 front, 1 rear) within 2.4m opening.

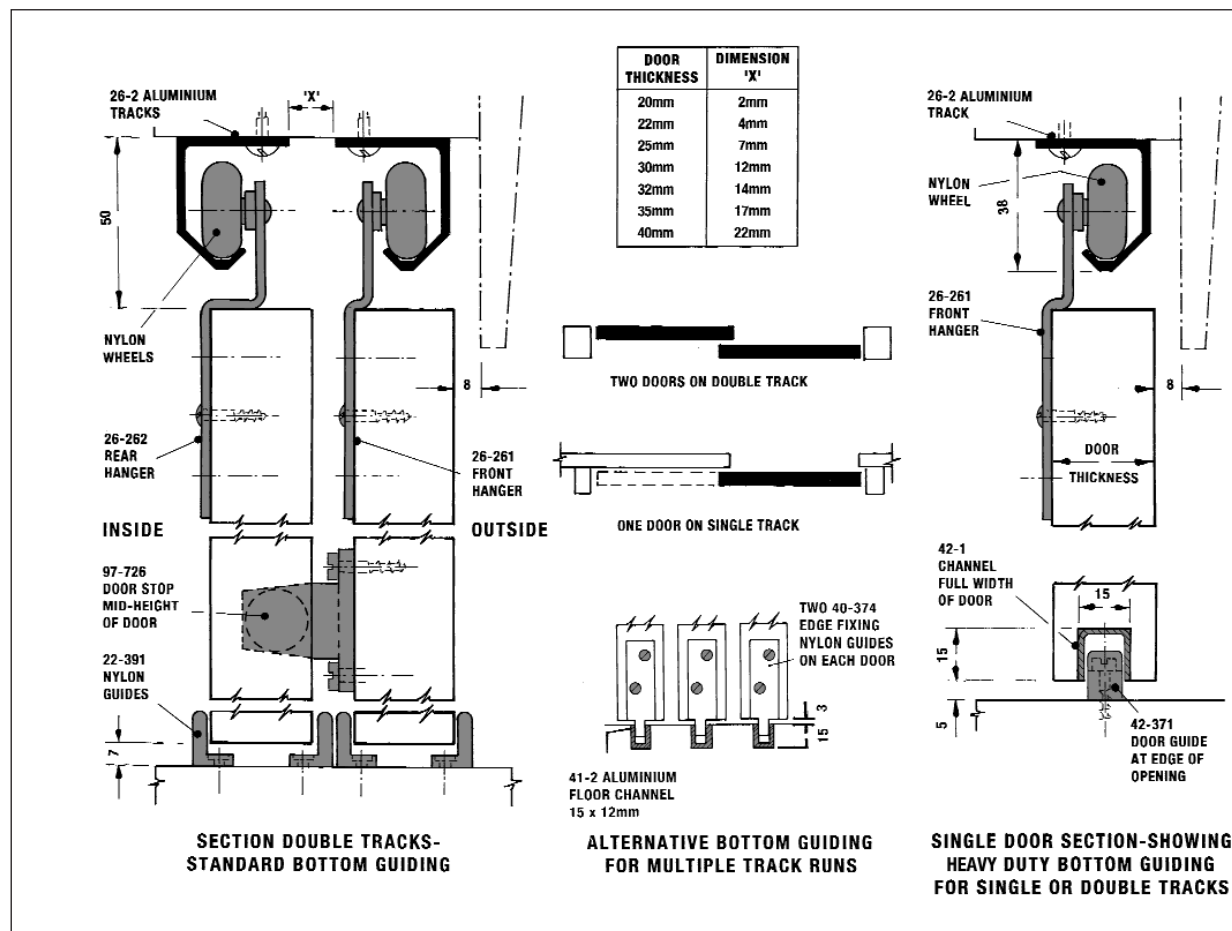
Contents per set: 2 lengths of top track, hangers, nylon guides, door stop & all screws for doors on parallel tracks.

SINGLE DOOR COMPONENT PACK 1H

Comprising all necessary hangers, guides, door stop and screws for one front door or Single 100 application. Rear door components available on request.

TOP TRACK

Available in 1.8m and 2.4m lengths.



Twin-Fold Folding Door Gear

FOR CUPBOARDS, WARDROBES, RECESSES ETC.

APPLICATION

Folding door system for built-in storage units where maximum access is required. Not suitable for rebated head or cill.

RANGE

- Maximum door weight 15kg (30lb).
 - Maximum door height 2.4m (8ft).
 - Maximum door leaf width 450mm (1ft 6ins).
- Hung in pairs, only 2, 4, 6 or 8 door leaves per opening.

DOOR CONSTRUCTION

Door thickness 20 to 35mm. All widths equal, refer to drawing for calculations.

FIXING

Top track soffit fixed. All fittings concealed from outside. Lateral and vertical adjustment with pivots.

TOP TRACK

Aluminium decorative finish one side d/c/sk for wood. Lengths 775mm and 930mm.

TOP PIVOT SOCKET SLIDE

Nylon, adjustable.

TOP PIVOT

Steel, spring loaded.

BOTTOM PIVOT

Steel, vertically adjustable.

BOTTOM PIVOT SOCKET SLIDE

Steel housing nylon socket laterally adjustable.

TOP ROLLER GUIDE

Steel, nylon roller spring loaded.

HINGES

Steel, zinc plated.

FURNITURE

Stops, pulls and alignment plates included.

FIXING SCREWS

Included for track and all fittings.

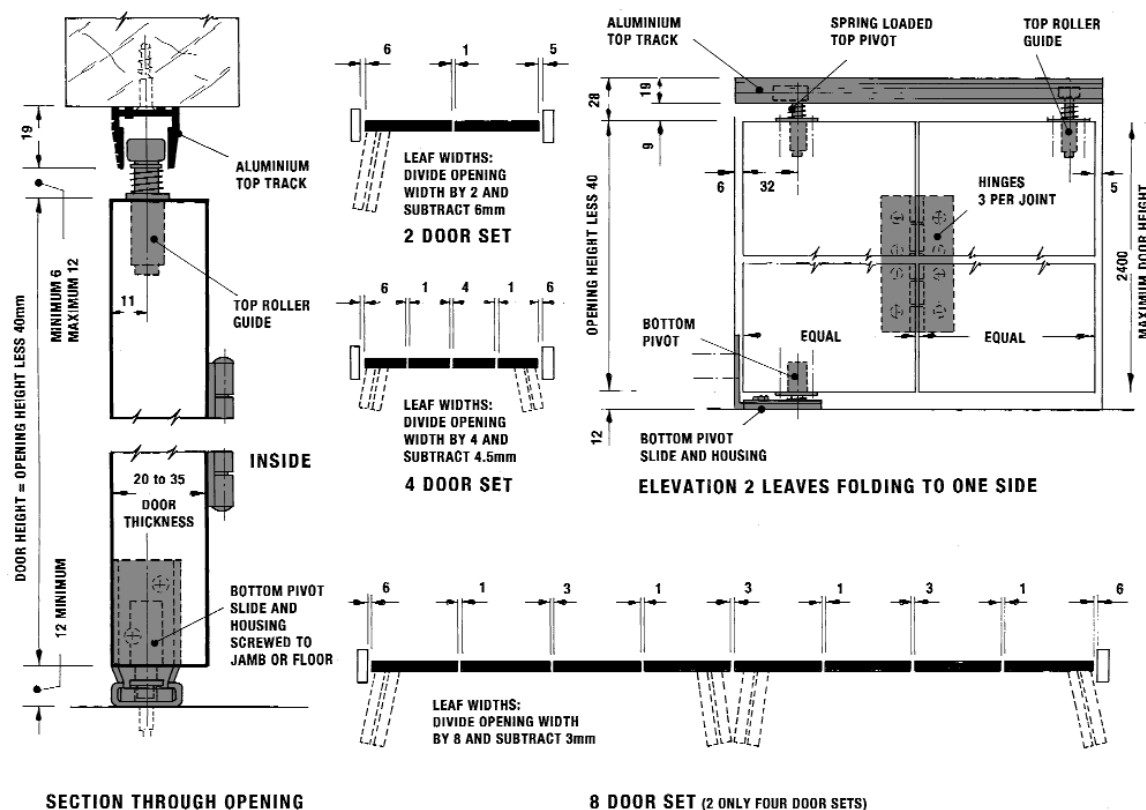
STANDARD TRACKSETS

SET TF 36/2 – 2 Doors, 900mm opening.

SET TF 60/4 – 4 Doors, 1.5m opening.

Contents per set: top track, top and bottom pivots, top guide, hinges, stop, handle and spanner.

Combinations of two - 2 door sets, one - 2 door set and one - 4 door set or two - 4 door sets may be used.



Foldaside 100 Sliding Door Gear

FOR INTERIOR END HUNG FOLDING DOORS USING EQUAL WIDTH DOOR LEAVES

APPLICATION

Top hung, end folding, light weight interior residential and commercial doors with concealed fixing for hangers and pivots.

RANGE

- Maximum leaf weight 27kg (60lb).
- Maximum leaf height 2.5m.
- Maximum leaf width 600mm.

Leaf thickness between 20 to 40mm. Swing leaves may not be used (except on opposite jamb). Up to 4 leaves may be hinged together with end leaf pivoted adjacent to jamb.

In situations where a greater degree of stability is required bottom guiding with floor channel should be used.

For door leaves over 450mm wide and/or over 15kg in weight, bottom guiding must be employed, minimum leaf thickness 30mm.

DOOR CONSTRUCTION

Solid, louvred or flush panelled construction with adequate provision for fixing end pivots and hangers.

TRACK

1-22 Extruded aluminium or 1-12 Galvanised steel. Drilled for 1-100 brackets or soffit fixing. Standard lengths 1.5m, 1.8m, 2.1m, 2.4m and 3.0m.

TRACK BRACKETS

1-100 Steel, side fixing with two screws. Alternatively 1-105 extruded aluminium, side fixing - see page 20 for details.

HANGERS

1-246 Steel construction, 4 nylon wheels, ball bearings lubricated for life. Vertical adjustment.

HINGES

95-521 Steel, plated. Surface mounted. 3 per joint for doors up to 2.1m high. 4 per joint recommended for higher doors.

TOP AND BOTTOM PIVOTS

95-508 Pressed steel top housing, clamp fixing in track. Spring loaded pivot fixed to top edge of door. Bottom pivot and housing, pressed steel with nylon socket slide. Vertical and lateral adjustment.

DOOR GUIDE

41-346 Steel plate, nylon swivel.

FLOOR CHANNEL

41-2 aluminium. Drilled and c/sk for woodscrew fixing.
Lengths 1.5m to 3.0m.

FURNITURE

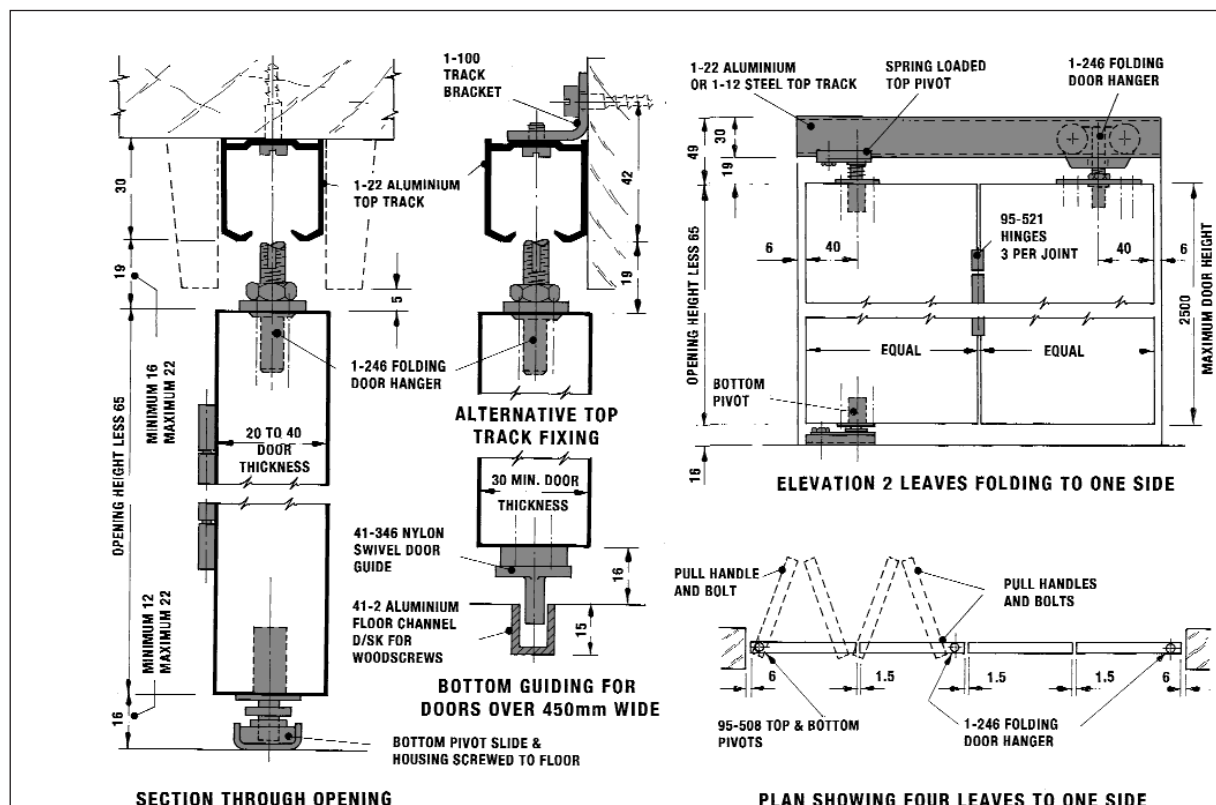
Full range shown on page 3.

FINISHES

Top track galvanised. Hangers, brackets, guides and pivots zinc plated. Furniture usually satin anodised.

CENTAFOLD 100

Standard Component Packs and Track as detailed for Centafold Series 100.



Centafold 100 Sliding Door Gear

APPLICATION

Top hung, centre folding, light weight interior residential and commercial doors with concealed fixing for hangers and pivots.

RANGE

- Maximum leaf weight 27kg (60lb).
- Maximum leaf height 2.5m.
- Maximum leaf width 600mm.

Leaf thickness between 20 to 40mm. Swing leaves may not be used (except on opposite jamb). 1½ or 3½ leaves may be hinged together with half leaf pivoted adjacent to jamb. For increased stability, bottom guides and floor channel are recommended on door leaves over 450mm wide, 15kg weight or 2.1m high. Minimum leaf thickness 30mm.

DOOR CONSTRUCTION

Solid, louvred or flush panelled construction with adequate provision for fixing end pivots and hangers.

DOOR GEAR COMPONENTS

All hangers, track, track brackets, pivots, guides, hinges etc., as specified for Foldaside Series 100.

STANDARD PACKSETS FOR CENTAFOLD AND FOLDASIDE DOOR ARRANGEMENTS

TWO DOORS FOLDING

COMPONENT PACK 100-020 – Comprising; 1 only 1-246 folding door hanger, 1 set top and bottom pivots, 3 only 95-521 hinges, 1 only 95-622 door pull, spanner, installation details and all screws.

FOUR DOORS FOLDING

COMPONENT PACK 100-040 – Comprising; 2 only 1-246 folding door hangers, 1 set top and bottom pivots, 9 only 95-521 hinges, 2 only 95-622 door pulls, spanner, installation details and all screws.

TOP TRACK

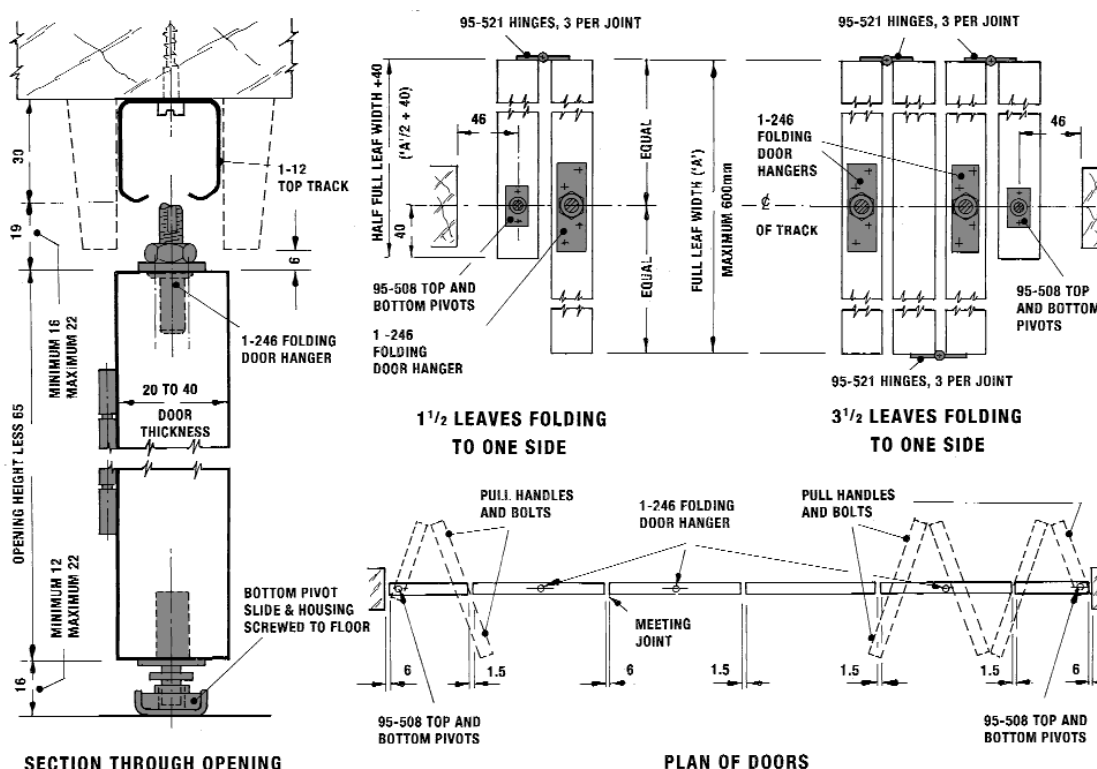
1-22 Extruded aluminium or 1-12 Galvanised steel. Drilled for 1-100 brackets or soffit fixing. Standard lengths 1.5m, 1.8m, 2.1m, 2.4m and 3.0m.

SIDE FIXING TRACK BRACKET PACKS

1-005 comprising 5 brackets with fixing screws for track lengths 1.5m, 1.8m or 2.1m. 1-008 comprising 8 brackets with fixing screws for track lengths 2.4m or 3.0m.

BOTTOM GUIDING

41-346 door guides with 41-2 channel in lengths to match top track.



House One Interior Sliding Door Gear

FOR QUIET AND RELIABLE OPERATION

APPLICATION

Internal sliding door gear for domestic and similar use.

RANGE

- Maximum door weight 45kg (100lb).
- Maximum door width 1050mm (3ft 6ins).
- Maximum door height 2.1m (7ft).

DOOR CONSTRUCTION

Door thickness 30 to 44mm. Drawing shows how doors can achieve an evenly balanced elevation from both sides.

FIXING

Top track side fixed. For soffit fixing use soffit fixing brackets. Door guide fixed to the reveal, leaving a clear threshold. Hangers have vertical and lateral adjustment. For cavities, use Straightaway 100 (see page 20).

HANGERS

Single nylon wheel on ground steel axle. Steel door plates.

TRACK

Aluminium, drilled and c/sk for side fixing.

DOOR GUIDE

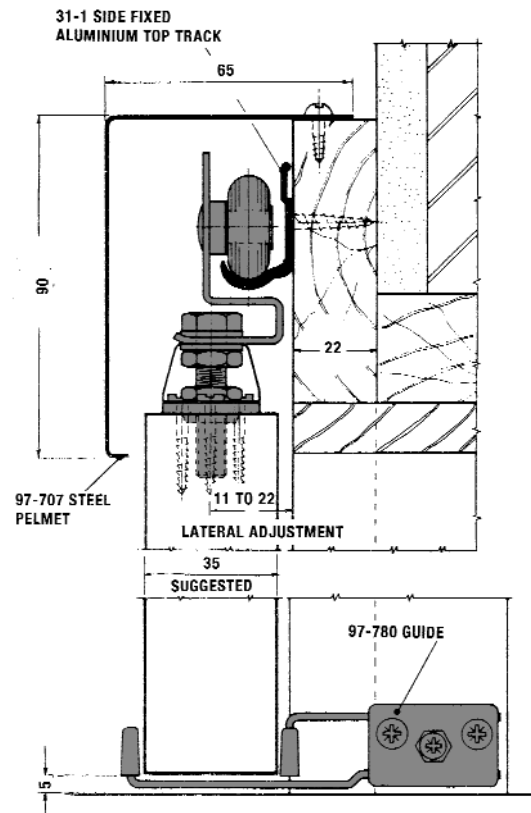
97-780 Nylon, two screw fixings, adjustable.

HOUSE ONE INTERIOR SLIDING DOOR GEAR

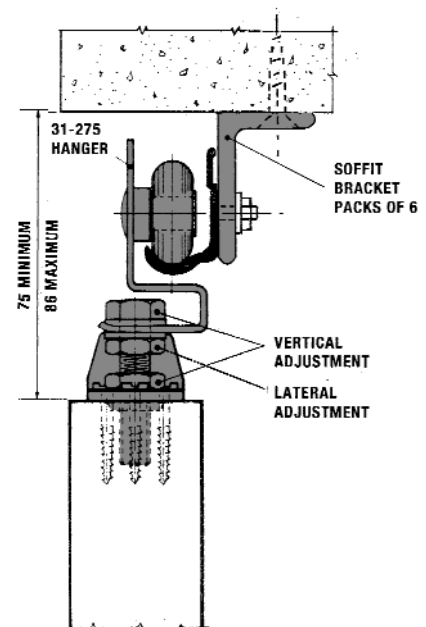
SET 1 – Side fixing for doors 600 to 750mm wide.

SET 2 – Side fixing for doors 750 to 900mm wide.

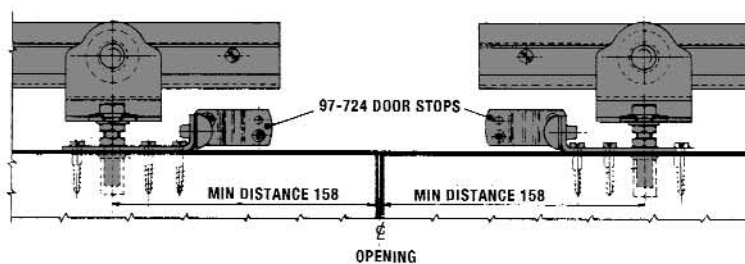
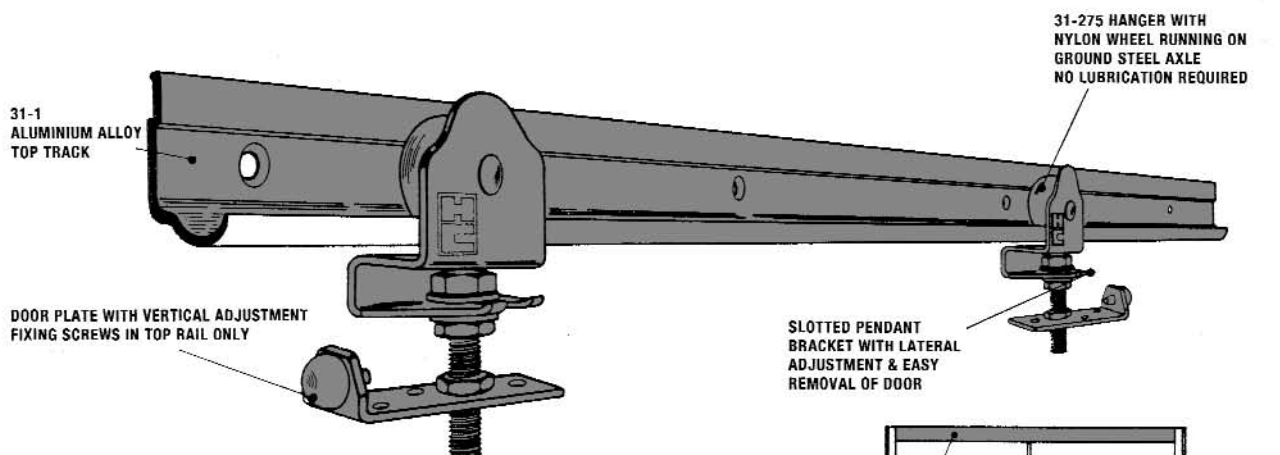
SET 3 – Side fixing for doors 900 to 1050mm wide. Contents per set, 1 length of aluminium top track, 1 pair adjustable hangers, door guide, door stops, installation details and all screws.



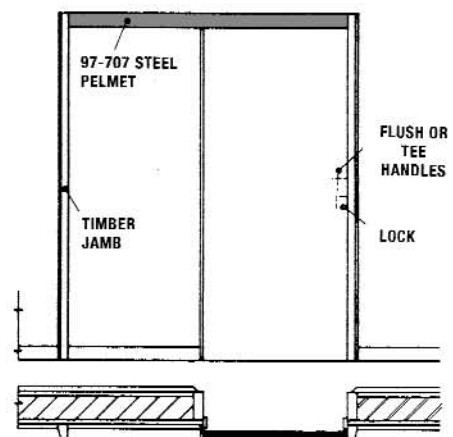
SECTION THROUGH OPENING



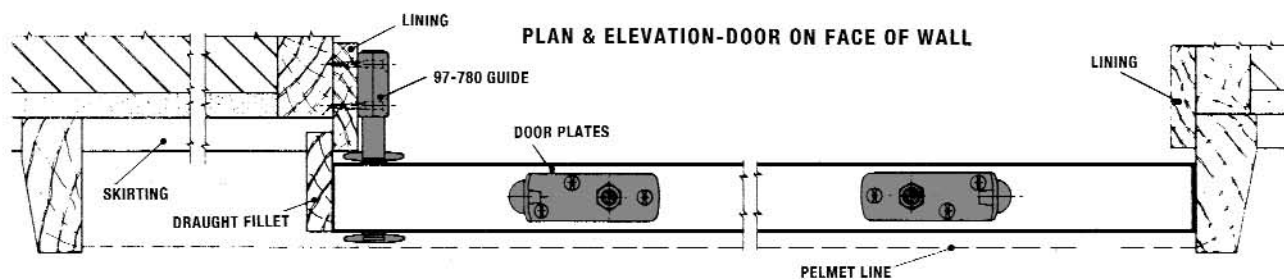
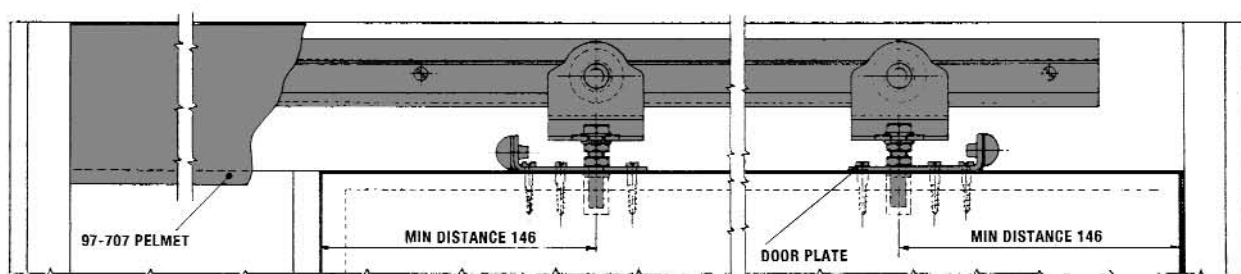
SOFFIT FIXING



BI-PARTING DOORS



ELEVATION & PLAN



Solo Vitesse Sliding Door Gear

FOR USE WHERE QUIET OPERATION AND MINIMUM EFFORT ARE REQUIRED

APPLICATION

Internal straight sliding door gear for domestic and similar use.

RANGE

- Maximum door weight 50kg (110lb).
- Maximum door height 2.1 m (7ft).
- Maximum door width 900mm (3ft).

DOOR CONSTRUCTION

Door thickness 30-44mm.

FIXING

Top track side fixed. For soffit fixing use timber bearer secured to soffit first. Single screw fixed guides on floor keep threshold clear. Not suitable for self-closing doors. Hanger carriage has vertical and lateral adjustment. Use two sets for bi-parting doors.

HANGER CARRIAGE

All steel, one carriage containing 2 differential nylon wheels with integral high tensile phosphor bronze pins.

TRACK

Galvanised steel drilled for side fixing. Length 1524mm.

DOOR PLATES

Steel, zinc plated with vertical and lateral adjustment.

DOOR STOP

97-726 Nylon with rubber buffer.

DOOR CHANNEL

Galvanised steel drilled and c/sk for wood.

FLOOR GUIDE

Nylon, single screw fixing.

FURNITURE

Full range of door furniture shown on page 3.

SOLO VITESSE SLIDING DOOR GEAR

STANDARD TRACKSETS

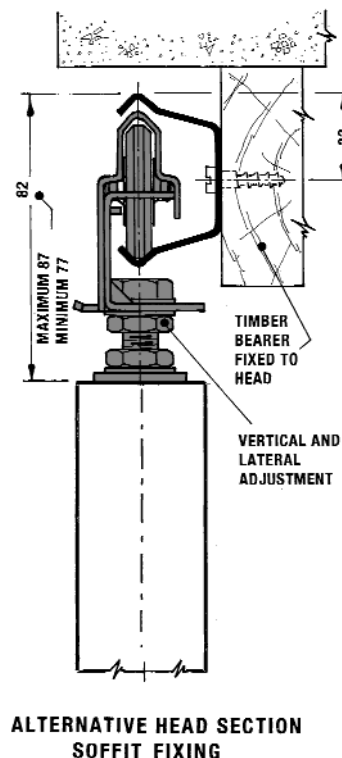
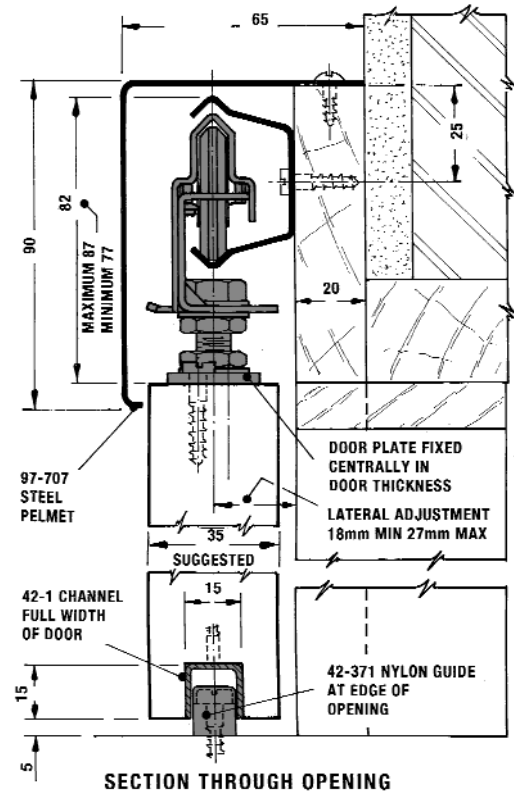
"Solo Vitesse" Sliding door gear is available in one standard pack only for doors up to 900mm wide. Contents per set: 1 length top track, hanger assembly, door plates, door channel for housing into underside of door, nylon door guide, alternative 97-780 bottom guide, door stop, installation details & all screws.

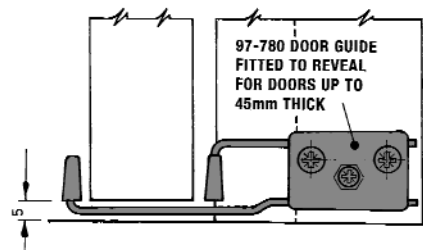
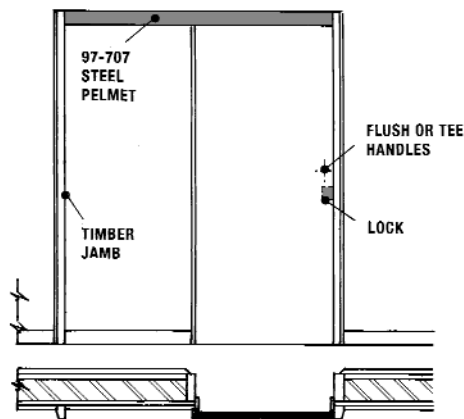
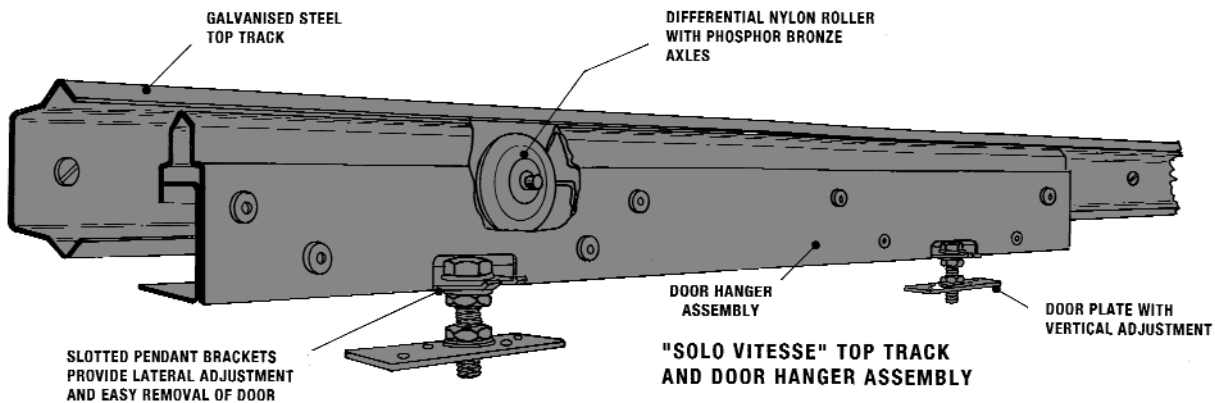
PELMETS

Galvanised steel

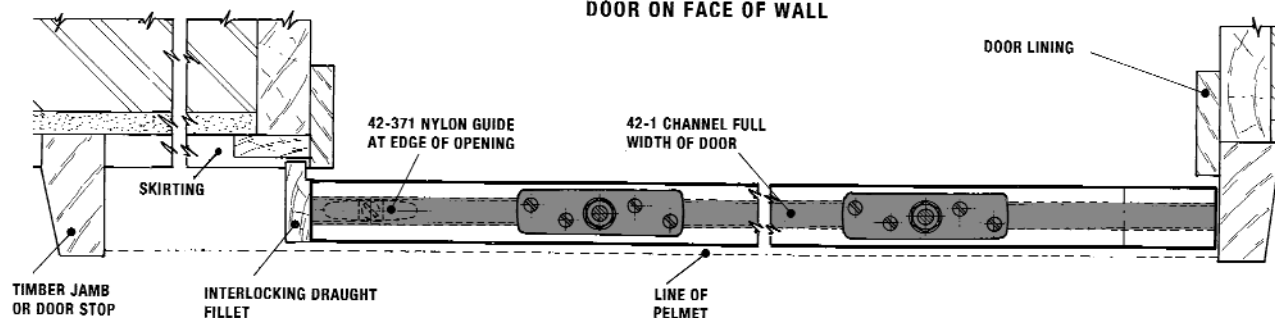
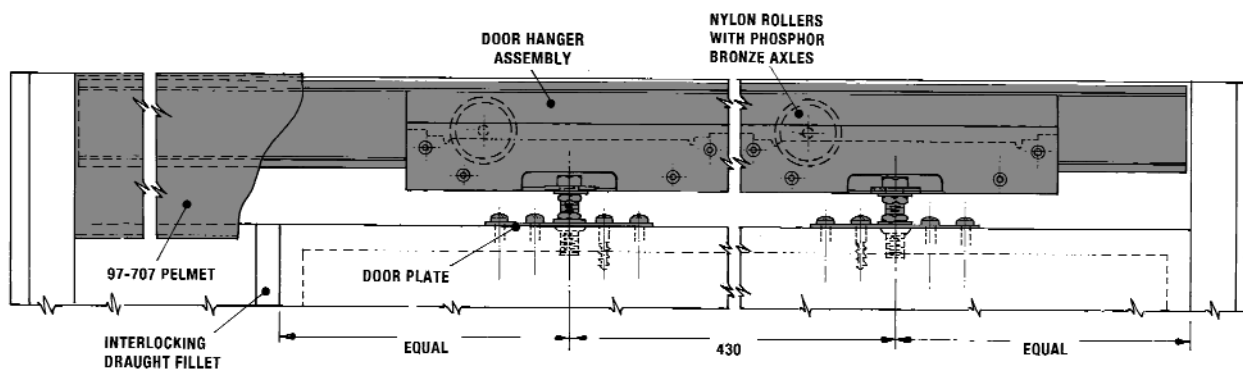
97-707-3 Length 1.8m.

97-707-5 Length 2.4m.





BI-PARTING DOORS
BUTT TRACKS AT CENTRE OF OPENING AND FIT INTERLOCKING FILLETS AT TRAILING EDGES TO PREVENT DOORS PASSING BEYOND CENTRE OF OPENING-SEE PLAN BELOW



Flyaside Panther Sliding Door Gear

OPERATING ON THE CAGED BALL RUNNER PRINCIPLE

APPLICATION

Internal straight sliding door gear for houses, offices, schools etc. For sturdy reliable operation.

RANGE

- Maximum door weight 55kg (120lb).
- Maximum door height 2.4m (8ft).
- Maximum door width 1500mm (5ft).

DOOR CONSTRUCTION

Door thickness 30 to 44mm. Drawing shows how standard doors can be used to achieve an evenly balanced elevation from both sides. Standard sets cater for doors up to 1500mm wide - See schedule below.



FIXING

Top track side fixed. For soffit fixing use soffit fixing brackets. Single screw fixed guides on floor keep threshold clear. Not suitable for self-closing doors. Vertical and lateral adjustment. For cavities, use Straightaway 100 Gear (see page 20) or a Hideaway Pocket Door Kit. Use two sets for bi-parting doors.

PRINCIPLE

Linear motion provided by a sliding inner bar supported by a double row of chrome steel balls running between a vee section outer member.

OUTER TRACK

Galvanised steel drilled and c/sk for screws.

INNER TRACK

Aluminium.

BALL CAGE

Galvanised steel strip ball retainer. Chrome steel balls.

PENDANT BRACKETS

Steel, open slot for lateral adjustment & removal of door.

DOOR PLATES

Steel, zinc plated, steel pendant bolts giving vertical adjustment.

DOOR CHANNEL

Galvanised steel, drilled and c/sk for wood.

FLOOR GUIDE

Nylon, single screw fixing.

FURNITURE

Full range of door furniture shown on page 3.

SIMULTANEOUS OPERATION OF 2 DOORS

Can be achieved by using Coburn Simultaneous Operator – catalogue no. 62100.

FLYASIDE PANTHER SLIDING DOOR GEAR

STANDARD TRACKSETS

SET 1P – For doors up to 600mm wide.

SET 2P – For doors 600 - 750mm wide.

SET 3P – For doors 750 - 900mm wide.

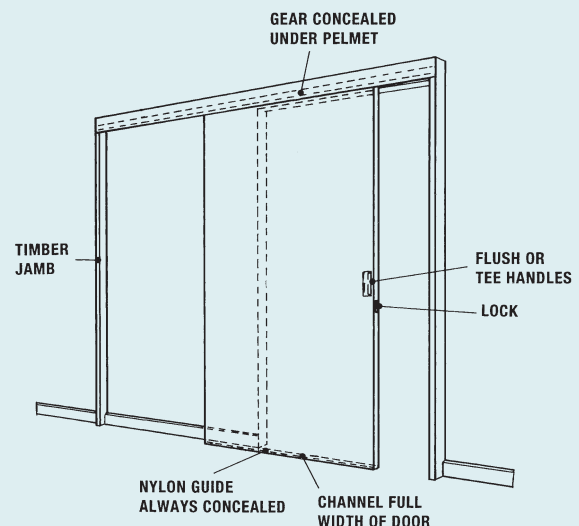
SET 4P – For doors 900 - 1050mm wide.

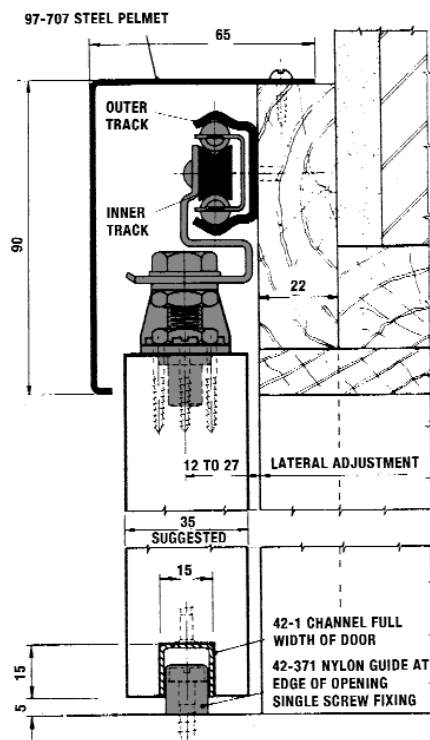
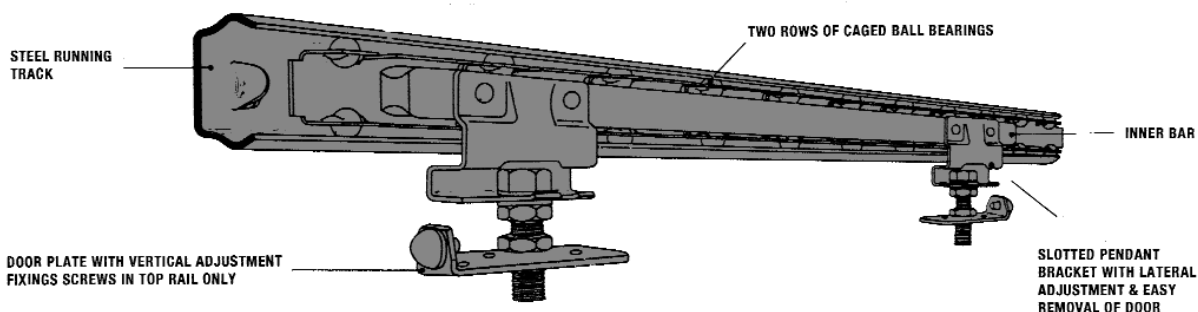
SET 5P – For doors 1050 - 1200mm wide.

SET 6P – For doors 1200 - 1350mm wide.

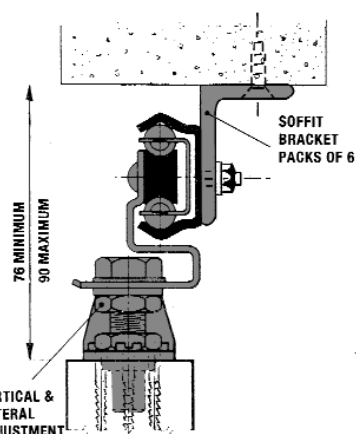
SET 7P – For doors 1350 - 1500mm wide.

Contents per set: 1 ball bearing top assembly with door plates and pendant bolts, door channel, floor guide, 2 door stops, installation details and all screws.

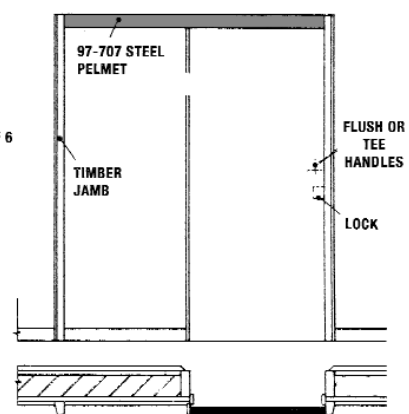




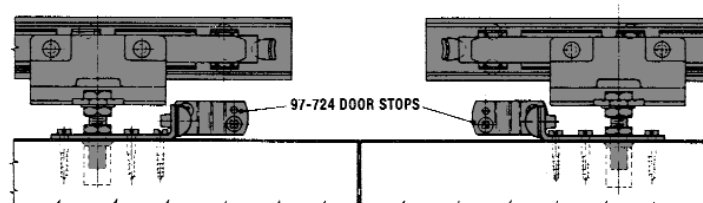
SECTION THROUGH OPENING



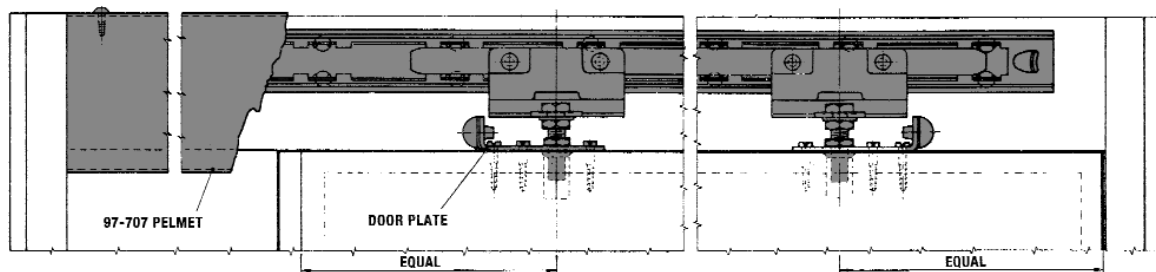
SOFFIT FIXING



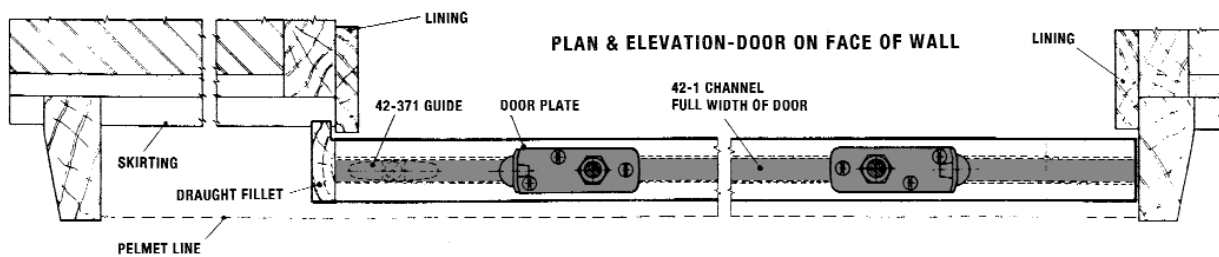
ELEVATION & PLAN



OPENING BI-PARTING DOORS



PLAN & ELEVATION-DOOR ON FACE OF WALL



Straightaway 100 Sliding Door Gear

FOR INTERIOR AND EXTERIOR STRAIGHT SLIDING DOORS

APPLICATION

Top hung straight sliding doors for domestic applications, schools, hospitals etc.

RANGE

- Maximum door weight 100kg.
- Maximum door height 2.5m.
- Door thickness 20 to 50mm.

DOOR CONSTRUCTION

Timber framed, panelled or glazed with adequate top rail for secure fixing of hanger. Minimum door thickness 30mm when using floor guide channel.

TRACK

1-22 Extruded aluminium or 1-12 Galvanised steel. Drilled for 1-100 brackets or soffit fixing. Standard lengths 1.5m, 1.8m, 2.1m, 2.4m and 3m.

TRACK BRACKETS

1-100 Steel, side fixing or 1-105 Extruded aluminium, open side fixing. 1-007 closed end piece converts 1-105 open bracket to any hand of closed end. 1-105 brackets are not suitable for use with 1-22 aluminium track.

HANGERS

1-203 Steel construction, 4 nylon wheels, ball bearings lubricated for life. Vertical and lateral adjustment.

DOOR GUIDE

97-780 Pressed steel and nylon construction. Suitable for doors up to 1.5m wide, 30 to 45mm thick. Alternative guides available as shown below.

TRACK END PIECE

1-719 Track End Piece with holdback catch within top track. Independent door stops should be fitted at mid-height of door.

FURNITURE

Full range shown on page 3.

FINISHES

Hangers, 1-100 brackets and door stops zinc plated. Furniture usually satin anodised. Straightaway 100 is also available in a range of stainless steel components. Details available on request.

STANDARD PACKSETS

Single door component pack 100-010 Comprising; 1 pair 1-203 nylon wheel hangers, 2 only 1-719 track end pieces, 97-780 no channel door guide, spanner, installation details and all screws.

SIDE FIXING TRACK BRACKET PACKS

1-005 for track lengths 1.5m, 1.8m, or 2.1m.

1-008 for track lengths 2.4m or 3.0m.

Comprising 5 or 8 1-100 brackets with fixing screws.

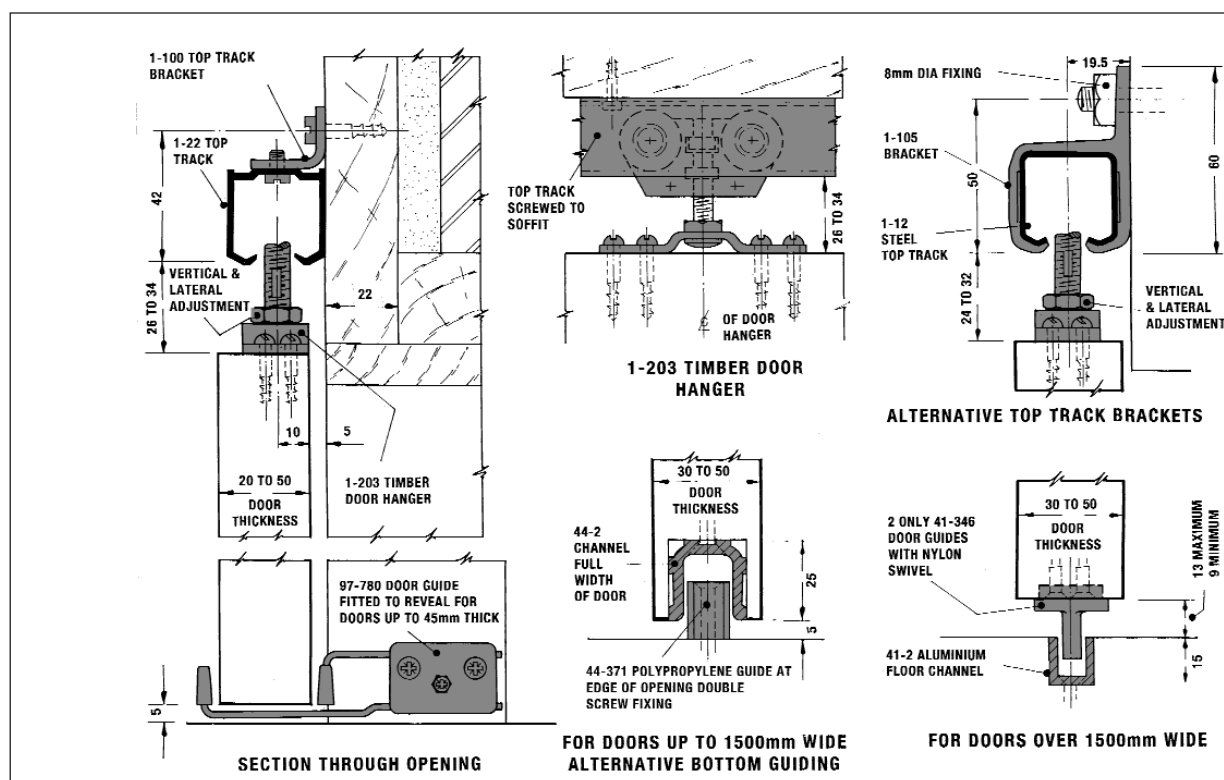
STANDARD TRACKSETS

Straightaway 100 is supplied in both tracksets and component form. Standard Tracksets are as follows:

SET 1-218 – for single door width up to 950mm.

SET 1-224 – for single door width up to 1250mm

Contents per set: Top Track, 2 nylon wheel hangers, 2 track end pieces, 5 brackets (8 in 1-224), door guide, spanner, all screws and installation details.



Straightaway 660 Bottom Rolling Door Gear

FOR DOORS ON SINGLE AND MULTIPLE PARALLEL TRACK RUNS

APPLICATION

For internal bottom rolling doors for wardrobes, cupboards, etc. Single or multiple runs of track.

RANGE

- Maximum door weight 55kg (120lb).
- Maximum door height 2.1m (7ft).

The area of a single door should be related to all other factors.

DOOR CONSTRUCTION

Door thickness 30 to 45mm. Width one third height minimum, handle height three fifths from bottom for best results.

FIXING

Top channel soffit fixed. Floor tracks recessed or surface mounted. Mortice rollers suit 30mm doors minimum.

BOTTOM ROLLERS

66-401 Mortice fixing. Steel casing zinc plated, nylon wheels, ground steel axles.

BOTTOM TRACKS

66-1 Steel, 66-3 or 70-3 Brass. Drilled and c/sk for woodscrews. Lengths 1.8m to 3.0m.

TOP GUIDES

42-374 Nylon, edge fixing.

TOP GUIDE CHANNEL

42-1 Galvanised steel. Drilled and c/sk for woodscrews. Lengths 1.8m to 3.0m.

FURNITURE

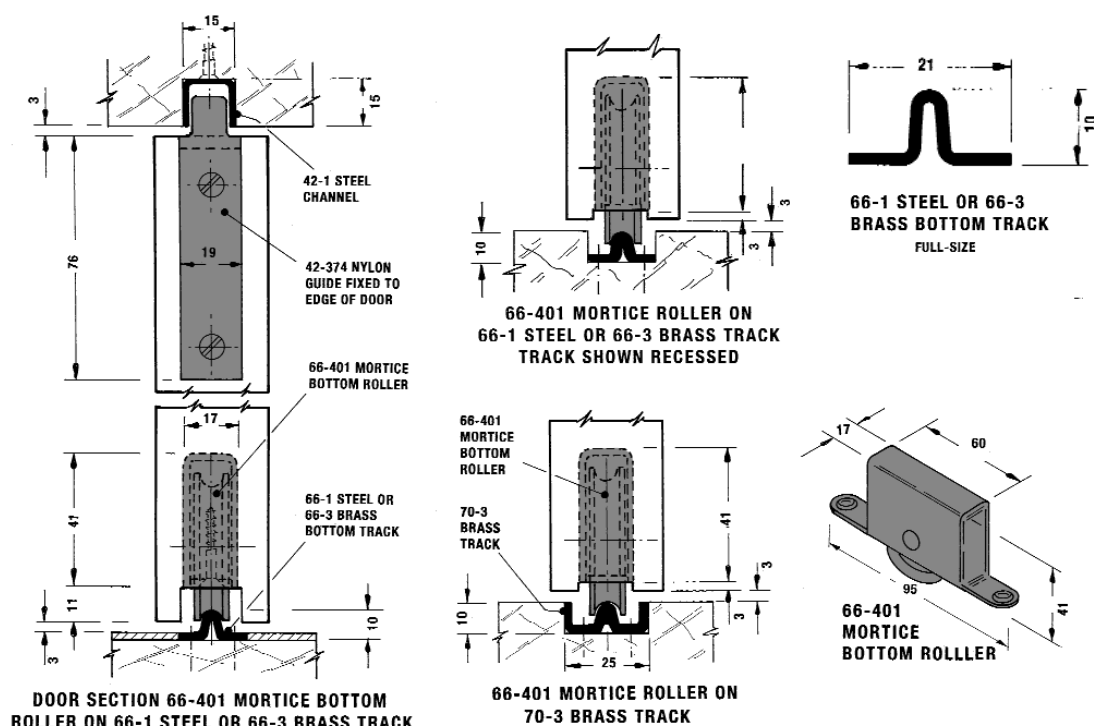
Full range of door furniture shown on page 3.

FINISHES

Bottom roller casing plated, steel track and channel galvanised, furniture usually satin anodised.

FIXING SCREWS

Included for all track and fittings.



Straightaway 700 Bottom Rolling Door Gear

FOR STRAIGHT SLIDING DOORS AND WINDOWS

APPLICATION

Bottom rolling straight sliding heavy duty cupboard doors, timber patio doors and windows.

RANGE

- Maximum door weight 115kg (250lb).
- Maximum door height 2.4m (8ft).

The area of a single sliding leaf should be related to all other factors.

DOOR CONSTRUCTION

Door thickness 30 to 60mm, width one third height minimum, handle height three fifths from bottom for best results. When fully open the sliding panel should project a minimum of 65mm to avoid fingers becoming trapped between handle and fixed panel. Bottom rail should be of sufficient depth to house roller casing.

FIXING

Top guide track soffit fixed. Floor track may be recessed or proud. Mortice for bottom rollers must fit tight around roller casing and weight of sliding door carried on top of casing above wheel.

BOTTOM ROLLERS

64-402 Bottom roller for 64-3 track, 70-402 Bottom roller for 66-1, 66-3 and 70-3 tracks. Die cast casings, nylon wheels with needle bearings.

BOTTOM TRACKS

66-1 steel, 66-3, 64-3 and 70-3 Brass. Drilled and c/sk for woodscrews. Lengths 1.8m to 3.0m.

TOP GUIDES

44-362 Aluminium rattleproof top guides with brush welt, two screw fixing.

TOP CHANNEL

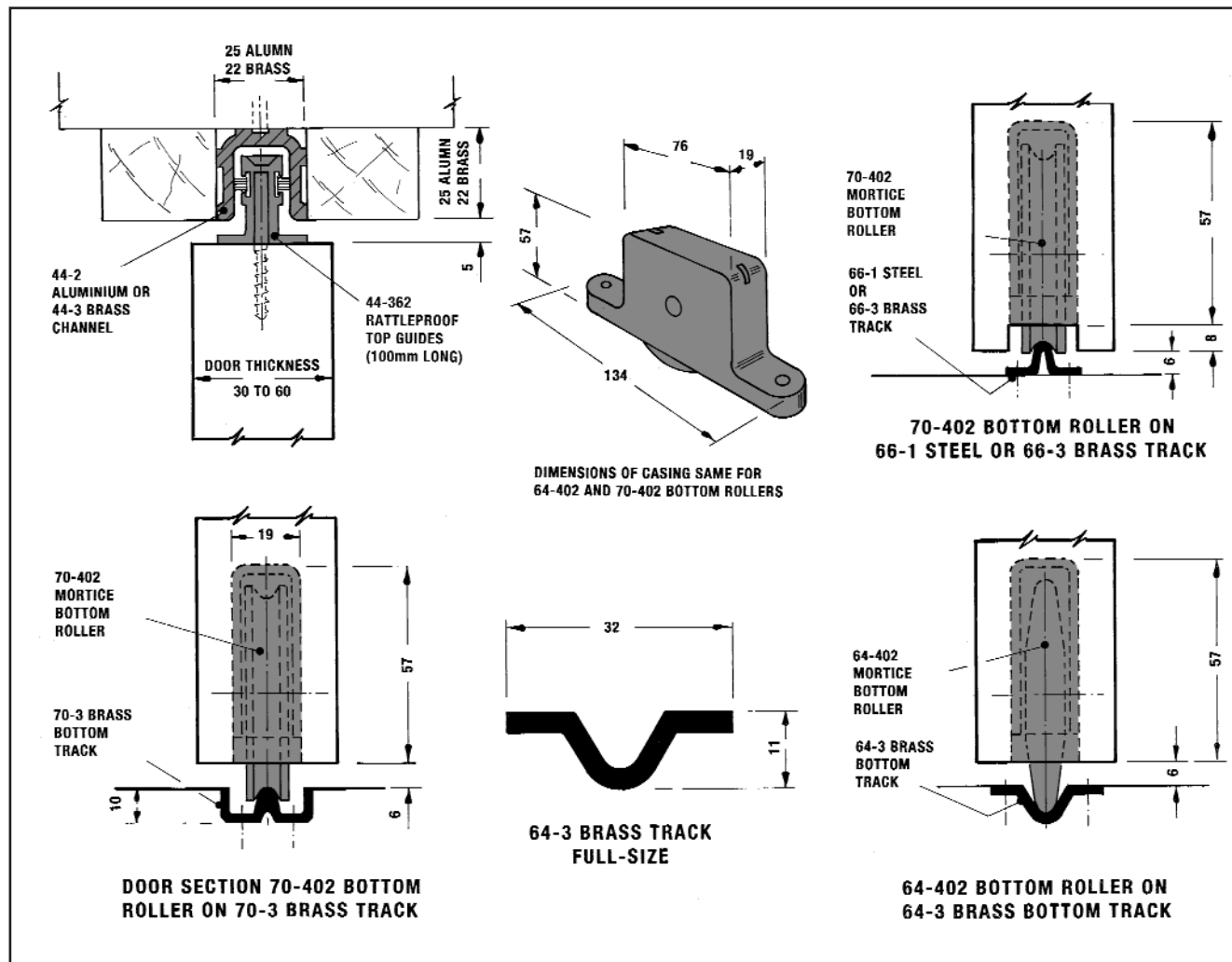
44-2 Aluminium or 44-3 Brass. Drilled and c/sk for woodscrews. Lengths 1.8m to 3.0m.

FURNITURE

Full range of door furniture shown on page 3.

FINISHES

Aluminium and brass tracks self-colour. Straightaway 700 is also available in a range of stainless steel components. Details available on request.



Straightaway 710 & 720 Bottom Rolling Door Gear

FOR STRAIGHT SLIDING DOORS AND WINDOWS

APPLICATION

For heavy straight sliding bottom rolling doors and windows. Single or multiple runs of track.

RANGE

Gear type	710	720
Max. door weight	180kg (400lb)	400kg (880lb)
Max. door height	3.0m (10ft)	3.5m (11ft)

DOOR CONSTRUCTION

Door thickness 44 to 60mm according to type of construction. Bottom rail should be sufficiently deep to house roller casing.

FIXING

Top guide tracks soffit fixed. Floor tracks may be recessed or proud. Mortice for bottom rollers must fit tight around casing. Weight of door must be carried on top of roller casing above wheel.

BOTTOM ROLLERS

71-402 for 70-3 track. 72-402 for 72-3 tracks. Die cast cases, steel wheels, ball bearing.

BOTTOM TRACKS

70-3 Brass. 72-3 Brass. Drilled & c/sk lengths 1.8m to 3.0m.

TOP GUIDES

7-362 for 7-20 track. 8-362 for 8-25 track. Twin wheel, rattleproof.

TOP GUIDE TRACK

7-20 (2.0mm). 8-25 (2.5mm) Galvanised steel to BS EN 10142. 7-20 drilled and c/sk for woodscrews. Lengths 1.8m to 3.0m.

FURNITURE

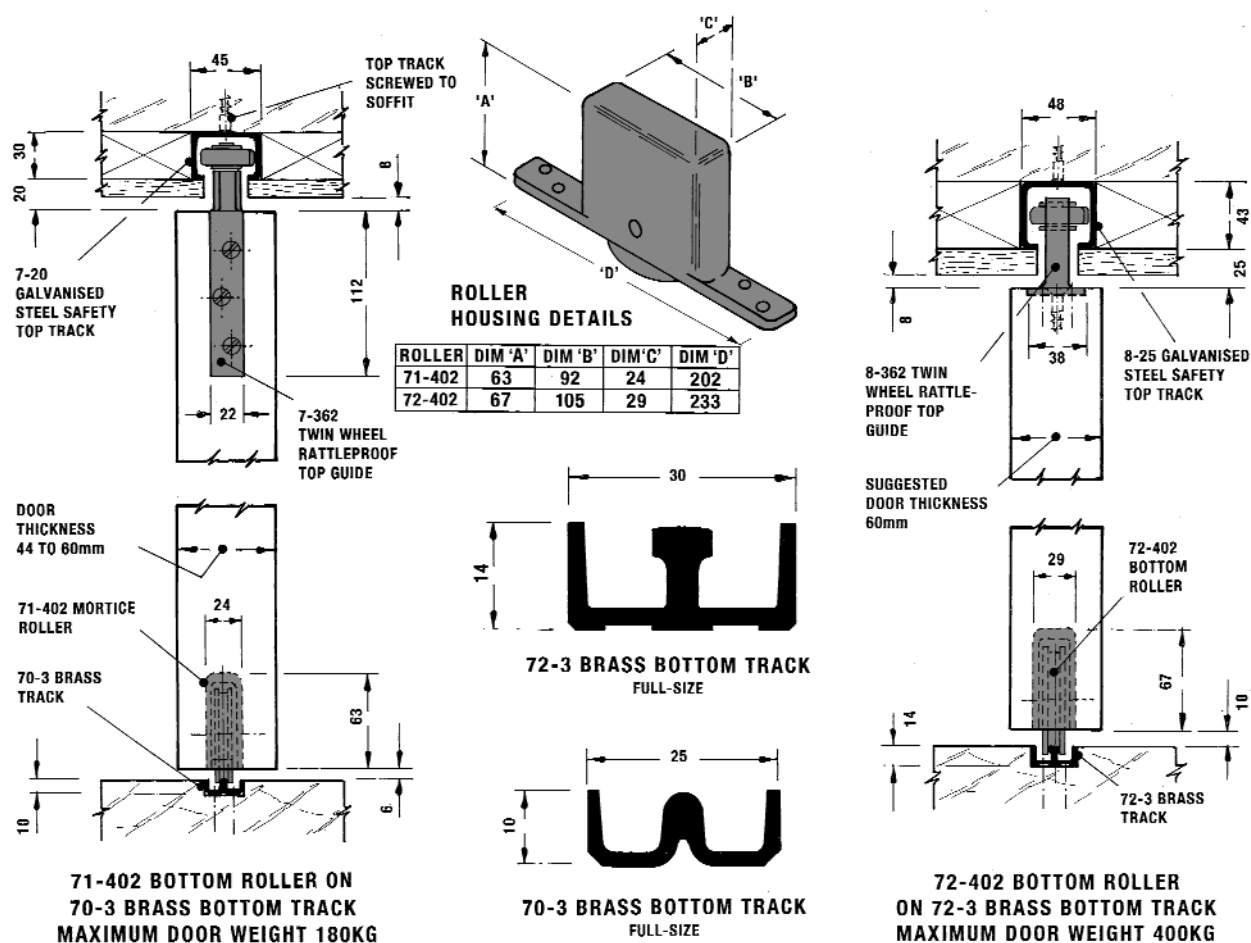
Full range of door furniture shown on page 3.

FINISHES

Top tracks galvanised. Furniture usually satin anodised.

FIXING SCREWS

Included for all track & fittings.



Hillaldam Coburn has a history of commitment to quality and technical developments. Products are always produced to the appropriate British Standards and the company was one of the first in the industry to have operating procedures approved under BS EN ISO 9001.

Constant testing ensures that quality is maintained and a programme of product improvement is regularly reviewed and updated. The company is an active member of the Association of Builders' Hardware Manufacturers. Today Hillaldam Coburn is proud to remain in the forefront of the industry as we take a leading role in working with the British Standards Institute to develop the new European standards (CEN). The following range of literature is available on request:

SLIDING DOOR GEAR

- Glassmaster 100
- Straightaway Door Gear
- Foldaside & Cornaway
- Interior Sliding Systems
- Centafold & Foldaside
- The Buyers Guide
- Supplementary Door Gears
- HIDEAWAY™ Pocket Door Kit

OTHER COBURN PRODUCTS

- Automatic Operators
- Movable Walls & Partitions
- GLIDEMASTER™ Sliding Closures

Hillaldam Coburn Ltd. also offers an extensive range of Acoustic products for walls and floors through its subsidiary, Trim Acoustics. Comprehensive literature is available on request.



INVESTOR IN PEOPLE



Certificate No. FS 14679

The products designed and supplied by Hillaldam Coburn Ltd are covered by a Quality Assurance system in accordance with BS EN ISO 9001: 2000

HILLALDAM COBURN LIMITED

HEAD OFFICE

Unit 6, Wyvern Estate,
Beverley Way, New Malden,
Surrey, KT3 4PH, England.

Telephone: 020 8336 1515

International: +44 20 8336 1515

Facsimile: 020 8336 1414

Sales Freefax: 0800 616623

e-mail: sales@hillaldam.co.uk

Web: www.coburn.co.uk

SCOTLAND

Unit 25 Baillieston Distribution Centre,
Glasgow, G69 6UL, Scotland.

Telephone: 0141 771 6165

Facsimile: 0141 773 1693

Sales Freefax: 0800 318904

The company reserves the right from time to time to make such alterations in design and manufacture as they consider necessary without notice. Drawings, specifications, illustrations, tables and other details are not binding in detail. Conditions of sale are as those published on the Company's tender forms.